



Press Kit

March 2023

Rhododendron Species Botanical Garden Overview

The Rhododendron Species Botanical Garden, located between Seattle and Tacoma, is a 22-acre woodland garden that is home the largest collection of *Rhododendron* species in the world. With a Victorian stumpery, Rutherford Conservatory, pond garden, extensive fern collection, rock garden, and more, visitors will experience a diverse botanical collection in a Pacific Northwest forest setting. The garden is home to beautiful companion plants, including the famous Himalayan Blue Poppies, Camellias, Magnolias, Japanese maples, and many rare plants.

The Visitor Center features interpretive information about the garden and a year-round nursery with plants that have been propagated and cultivated in on-site production greenhouses.

Quick Facts

Year Established	1964
Opened to public	1980
Annual Attendance	28,000
Acreage	22 acres with 13 features
R. species in collection	700+
Members	1,500
Volunteers	16
Operating Hours	Tue-Sun from 10 am-4 pm
Adult Admission	\$8.00

PROGRAMMING & MISSION STATEMENT

As a living museum, the RSBG conserves and shares its international collection with both the scientific community and the general public. Known worldwide for the garden's contributions to scholarship and research, the RSBG's educational and scientific offerings include an annual *Rhododendron* species symposium, workshops, annual community festivals, seed and pollen shipment, live plant distributions, selections of rare and ornamental plants, and a biannual catalog with up-to-the-minute findings.

Mission Statement The Rhododendron Species Foundation is a non-profit organization dedicated to the conservation, research, acquisition, evaluation, cultivation, public display, and distribution of *Rhododendron* species.

Staff

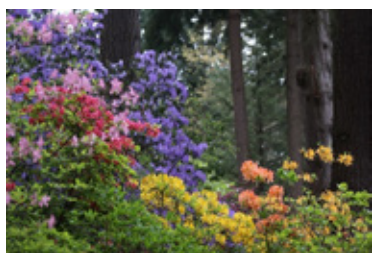
Steve Hootman Executive Director & Curator
Grace Pham Chief Business Officer
Atsuko Gibson Nursery Manager & Assistant Curator
Dennis Bottemiller Rutherford Conservatory Curator
Emily Joseph Assistant Nursery Manager
Will Clausen Horticulturist & Assistant Curator
Natalie Ries Marketing & Outreach Manager
Adam Duell Assistant Horticulturist
Matt Houghton Assistant Gardener
Janey O'Neil Administrative Assistant
Alexys George Visitor Services Representative

Media Inquiries: Natalie Ries; natalie@rhodygarden.org; (253) 345-2515

[FACEBOOK.COM/RHODYGARDEN](https://facebook.com/rhodygarden) • [INSTAGRAM.COM/RHODYGARDEN](https://instagram.com/rhodygarden) • [WEBSITE: RHODYGARDEN.ORG](https://rhodygarden.org)

2525 S 336 ST, FEDERAL WAY, WA 97003 • [INFO@RHODYGARDEN.ORG](mailto:info@rhodygarden.org) • 253.838.4646

[Click here to download high-res images
logos and brand messaging](#)



Late spring blooms



Rhododendron macgregoriae



Polystichum setiferum in the fall



R. orbiculare overlooking meadow



Himalayan Blue Poppy



Rutherford Conservatory in the fall



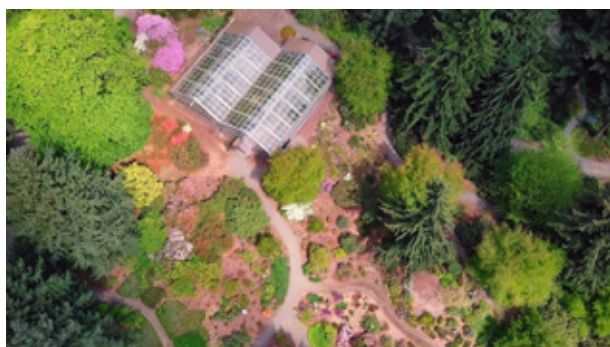
Pond in Rutherford Conservatory



Plant Sales Nursery



Cardocrinum giganteum



Aerial view of Rutherford Conservatory

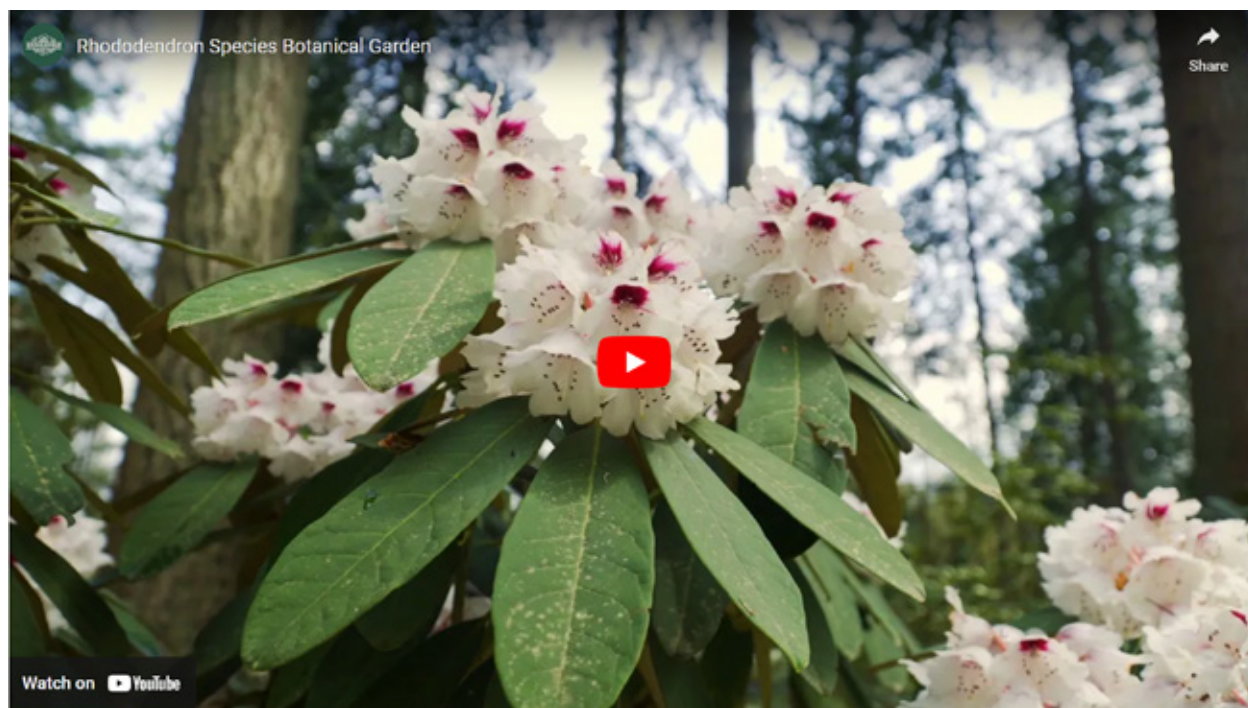


Rutherford Conservatory

Brief History

The Rhododendron Species Foundation is a non-profit organization founded and incorporated in 1964 by Pacific Northwest members of the American Rhododendron Society in order to secure the finest authentic forms of *Rhododendron* species and to develop a comprehensive collection of this plant genus. Because of the destruction of *Rhododendron* habitats in many areas of the world, conservation has become of primary importance in recent years. This concern led to the formation of the Rhododendron Species Foundation and has guided its activities.

Video: A day at the Garden



Press Coverage

Awards & Accolades

1996 Educational Exhibit Award of Merit - Northwest Flower & Garden Show

2003 Exceptional Educational Exhibit Award of Merit - Northwest Flower & Garden Show



Rhododendron Species Botanical Garden

Press Kit

2023 Events

Pop-up Plant Vendor Weekends!

Saturday & Sunday; April 1-2, 15-16, 22-23

May 6-7, 27-28

10 am – 4 pm

Throughout April & May, the garden will host featured vendor weekends in partnership with local nurseries. You'll have an opportunity to buy from boutique and wholesale vendors, providing a unique selection that you won't find anywhere else.

[READ MORE](#)

Mother's Day Weekend

Saturday & Sunday; May 13 & 14

10 am – 4 pm

Celebrate mom with a beautiful outing to the Rhody Garden! Explore 13 garden features, experience the garden at peak bloom, and picnic on our patio with delicious eats from a local food truck.

[READ MORE](#)

Blue Poppy Day

Saturday, May 20

10 am – 4 pm

The mystical Himalayan blue poppy, *Meconopsis*, will grace us with its ethereal beauty once again. Celebrate these fabulous flowers and enjoy a feast for your eyes. Walk through a meadow glowing with blooming blue poppies or stroll along the ADA accessible path through the blue poppy glade. There are two fields of poppies to enjoy and explore!

[READ MORE](#)

Rhododendron Species Symposium

Friday & Saturday, June 9 & 10

12-5 pm Fri. • 9 am-10 pm Sat

Hear from Keynote Speaker Daniel Hinkley as well as Steve Hootman and other plant experts in this fun-filled session.

[READ MORE](#)

Evening in the Garden

Saturday, July 29, 2023

5 – 8:30 pm

Rhody Garden Volunteers and Members are invited to a night of enchanting music, savory cuisine, wine & beer, garden tours, and a rare plant auction.

[READ MORE](#)

Member Appreciation Day

Sunday; September 17

10 am – 4 pm

Membership makes us grow and thrive! As a way of thanking our loyal Members for their continued support, we invite you to join us for our Member Appreciation Day featuring a lunch, discounts on plants, garden tours, and a rare plant silent auction.

[READ MORE](#)

Fall Foliage Festival

Saturday & Sunday; October 28 & 29

10 am – 4 pm

Celebrate autumn at our Fall Foliage Festival with live entertainment, tours, plant talks, and plant sales.

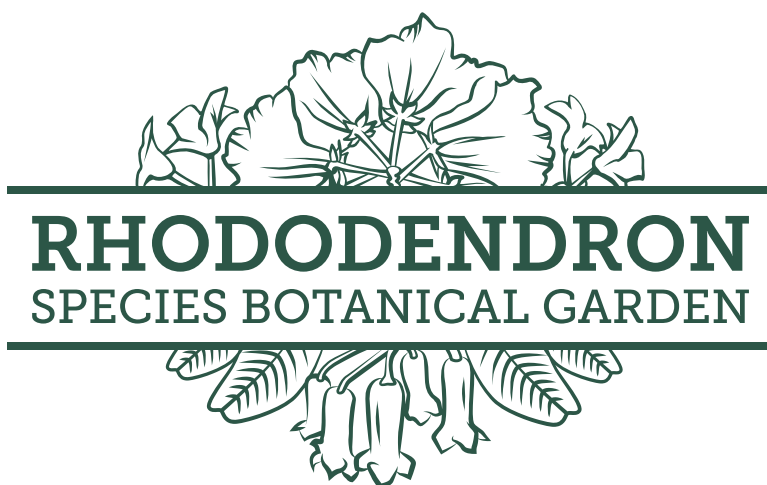
[READ MORE](#)



Rhododendron Species Botanical Garden

Press Kit

Logo Usage Green





Rhododendron Species Botanical Garden

Press Kit

Logo Usage Black

