

## Rhododendron Species Botanical Garden Overview

The Rhododendron Species Botanical Garden, located between Seattle and Tacoma, is a 22-acre woodland garden that is home the largest collection of *Rhododendron* species in the world. With a Victorian stumpery, Rutherford Conservatory, pond garden, extensive fern collection, rock garden, and more, visitors will experience a diverse botanical collection in a Pacific Northwest forest setting. The garden is home to beautiful companion plants, including the famous Himalayan Blue Poppies, Camellias, Magnolias, Japanese maples, and many rare plants.

The Visitor Center features interpretive information about the garden and a year-round nursery with plants that have been propagated and cultivated in on-site production greenhouses.

## Quick Facts

Year Established	1964
Opened to public	1980
Annual Attendance	28,000
Acreage	22 acres with 13 features
R. species in collection	700+
Members	1,500
Volunteers	16
Operating Hours	Tue-Sun from 10 am-4 pm
Adult Admission	\$8.00

### PROGRAMMING & MISSION STATEMENT

As a living museum, the RSBG conserves and shares its international collection with both the scientific community and the general public. Known worldwide for the garden's contributions to scholarship and research, the RSBG's educational and scientific offerings include an annual *Rhododendron* species symposium, workshops, annual community festivals, seed and pollen shipment, live plant distributions, selections of rare and ornamental plants, and a biannual catalog with up-to-the-minute findings.

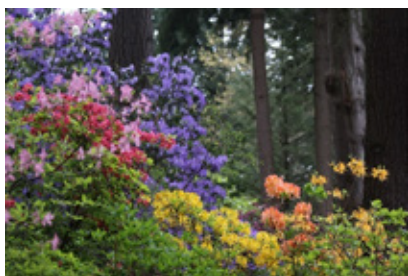
**Mission Statement** The Rhododendron Species Foundation is a non-profit organization dedicated to the conservation, research, acquisition, evaluation, cultivation, public display, and distribution of *Rhododendron* species.

## Staff

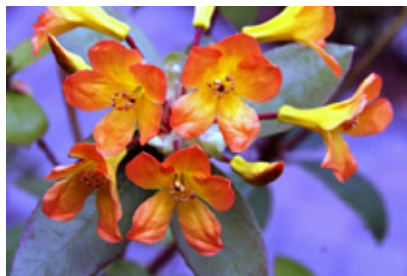
**Steve Hootman** Executive Director & Curator  
**Grace Pham** Chief Business Officer  
**Atsuko Gibson** Nursery Manager & Assistant Curator  
**Dennis Bottemiller** Rutherford Conservatory Curator  
**Emily Joseph** Assistant Nursery Manager  
**Will Clausen** Horticulturist & Assistant Curator  
**Adam Duell** Assistant Horticulturist  
**Matt Houghton** Assistant Gardener  
**Amy Greenwold** Visitor Services Representative  
**Natalie Ries** Marketing & Outreach Manager  
**Janey O'Neil** Administrative Assistant

**Media Inquiries:** Natalie Ries; [natalie@rhodygarden.org](mailto:natalie@rhodygarden.org); (253) 345-2515

# Rhododendron Species Botanical Garden throughout the seasons.



Late spring blooms



*Rhododendron macgregoriae*



*Polystichum setiferum* in the fall



*R. orbiculare* overlooking meadow



Himalayan Blue Poppy



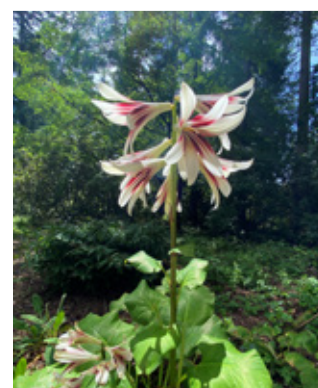
Rutherford Conservatory in the fall



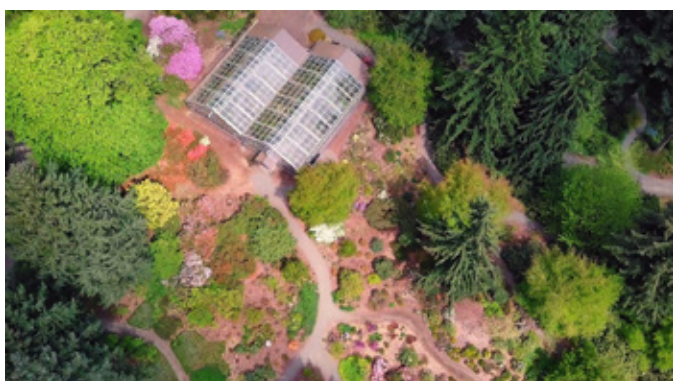
Pond in Rutherford Conservatory



Plant Sales Nursery



*Cardocrinum giganteum*



Aerial view of Rutherford Conservatory



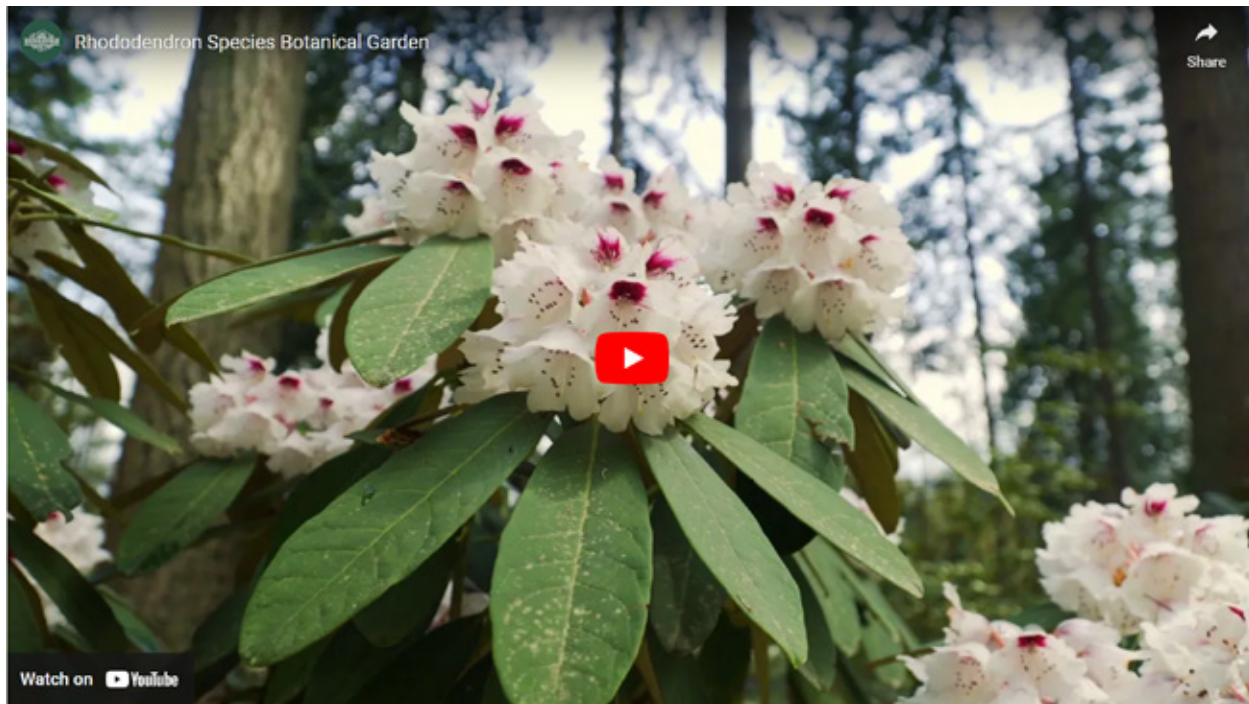
Rutherford Conservatory



## Brief History

The Rhododendron Species Foundation is a non-profit organization founded and incorporated in 1964 by Pacific Northwest members of the American Rhododendron Society in order to secure the finest authentic forms of *Rhododendron* species and to develop a comprehensive collection of this plant genus. Because of the destruction of *Rhododendron* habitats in many areas of the world, conservation has become of primary importance in recent years. This concern led to the formation of the Rhododendron Species Foundation and has guided its activities.

## Video: A day at the Garden



## Press Coverage

## Awards & Accolades

1996 Educational Exhibit Award of Merit - Northwest Flower & Garden Show

2003 Exceptional Educational Exhibit Award of Merit - Northwest Flower & Garden Show

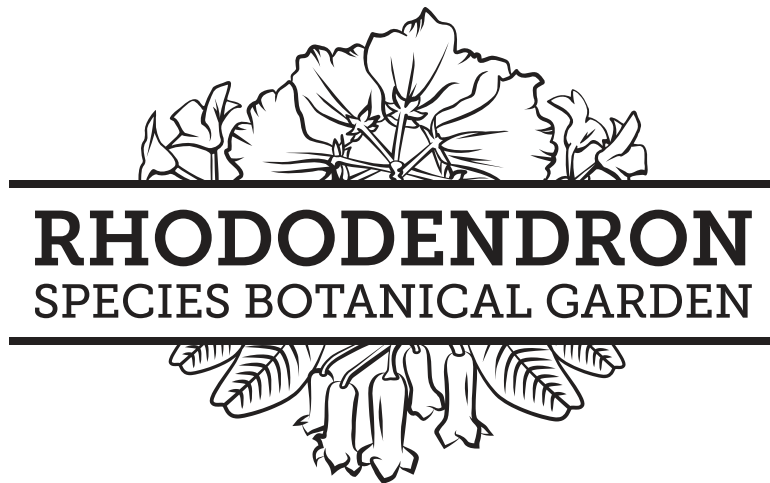


# Rhododendron Species Botanical Garden

## Press Kit

---

### Logo Usage Black

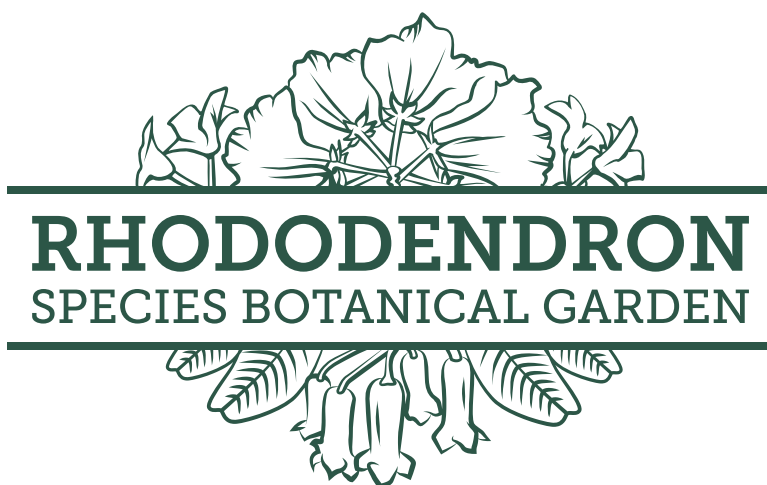




# Rhododendron Species Botanical Garden Press Kit

---

## Logo Usage Green





# Rhododendron Species Botanical Garden

## Press Kit

---

## 2023 Events

### Pop-up Plant Vendor Weekends!

Saturday-Sunday; April 1-2, 15-16, 22-23

May 6-7, 27-28

10 am – 4 pm

Throughout April & May, the garden will host featured vendor weekends in partnership with local nurseries. You'll have an opportunity to buy from boutique and wholesale vendors, providing a unique selection that you won't find anywhere else.

[READ MORE](#)

### Mother's Day Weekend

Saturday-Sunday; May 13-14

10 am – 4 pm

Celebrate mom with a beautiful outing to the Rhody Garden! Explore 13 garden features, experience the garden at peak bloom, and picnic on our patio with delicious eats from a local food truck.

[READ MORE](#)

### Blue Poppy Day

Saturday, May 20

10 am – 4 pm

The mystical Himalayan blue poppy, *Meconopsis*, will grace us with its ethereal beauty once again. Celebrate these fabulous flowers and enjoy a feast for your eyes. Walk through a meadow glowing with blooming blue poppies or stroll along the ADA accessible path through the blue poppy glade. There are two fields of poppies to enjoy and explore!

[READ MORE](#)

### Rhododendron Species Symposium

Friday-Saturday; June 9-10

12 am – 12 pm

RSBG is reimagining the Symposium for 2023. Stay tuned for details on the new and improved version.

[READ MORE](#)

### Evening in the Garden

Saturday, July 29, 2023

5 – 8:30 pm

RSBG is reimagining Evening in the Garden for 2023. Stay tuned for details on the new and improved version.

[READ MORE](#)

### Fall Foliage Festival

Saturday-Sunday; October 21-22

10 am – 4 pm

Celebrate autumn at our Fall Foliage Festival that features tours, plant talks, and plant sales.

[READ MORE](#)

### Member Appreciation Day

Sunday; September 17

10 am – 4 pm

Membership makes us grow and thrive! As a way of thanking our loyal Members for their continued support, we invite you to join us for our Member Appreciation Day, featuring discounts on plants, delicious food, garden tours, activities for kids, and silent auction.

[READ MORE](#)